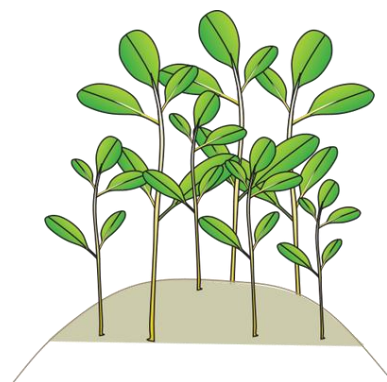


**M SE YOU MOUN
RESKONSAB !
M'AP PWOTEGE
ANVIWONMAN A
POU'M KA GEN YOU
LAVI MIYO!**



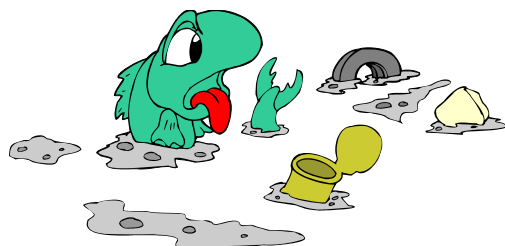
©2012 FoProBiM

**KI JEN NOU KA EDE
PWOTEGE
MUNG
AK
MUNG
NAN PEYI A**

1- Pa koupé ni déshouké mung.



2- Pa jété fatra nan lanme a.



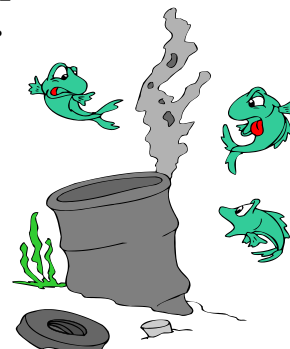
3- Pa kanpé sou mung yo.



4- Pa kité kanôt ou fwapé mung yo.

5- Pa maré kanôt ou sou mung yo.

**6- Pa lagé lwil ak lòt bagay ki
nwizib pou anviwonman a nan
lanme a.**



**7- Véyé pou-ou pa mété sab sou
mung yo.**

8- Pa maré bet nan mung yo.



**9- Planté pye bwa tout koté pou tè
ak labou pa désan nan lanme a
pou'l toufé mung yo.**



**10- Infomé tout moun sou rôl
impotant mung genyen nan
anviwonman a.**

**Mung
KI SA YO YE, KI
JEN POU'N
PWOTEGE YO**

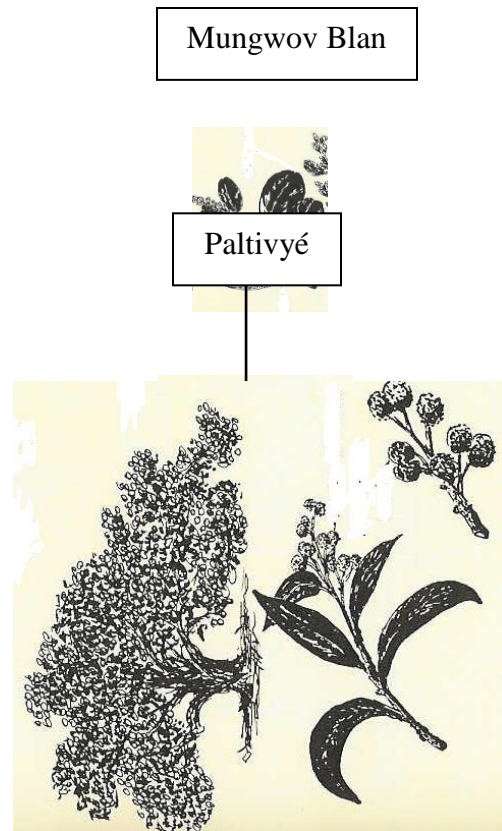
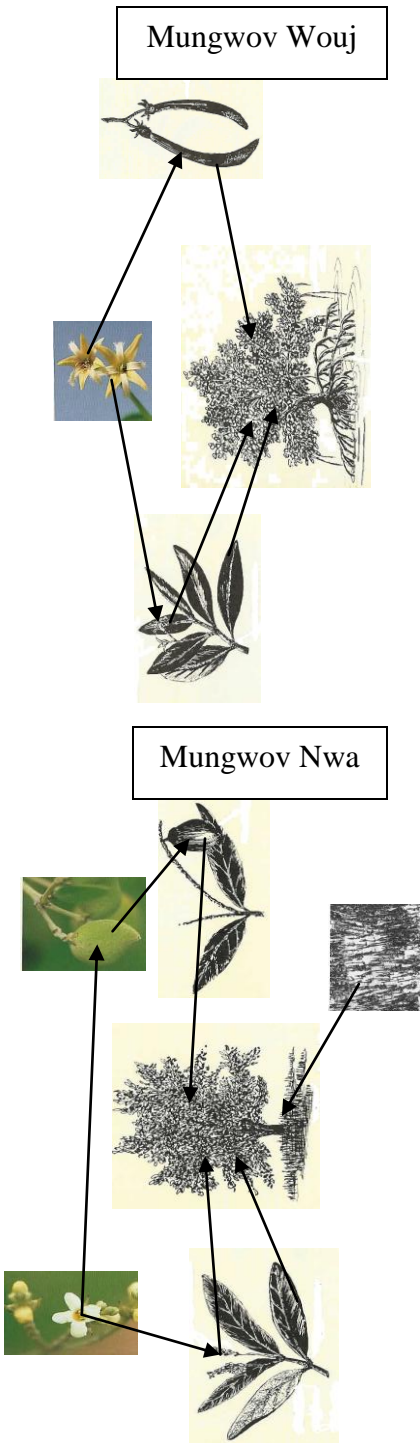


Présenté pa



Fondasyon pou Pwoteksyon Biodivesité
Marine
FoProBiM





DEFYNYSYON
 Mung sé you plunt li yé.
 Li gen fey, twon, ak racin. Li
 fe fle, fwi, ak semens. Li
 bezwen soley, te, ak dlo.
 Epitou, fok nou pa jenen'l
 twop pou'l ka grandi. Si nou
 koupe'l twop l'ap mouri.



**KI KOTE NOU JWEN
 MUNG?**

Nou gen anpil mung nan
 bodme Karakol-la.
 Nou jwen mung nan tout
 lanme zon twopikal dan le
 mond.

Nou jwen mung bo lanme a.
 Mung se youn nan sel pye
 bwa ki ka grandi nan dlo
 lanme.

Pou mung ka grandi byen
 fok li gen axse ak dlo lanme.
 Fok li jwen ou ti labou pou'l
 ka poze racin li.

Fok pa gen twop polisyon.
 Fok dlo-a tyed.
 Fok nou ba'l ou chans pou'l
 ka pousé!

Mung yo gen ampil impotans.

Li se koté anpil pwason kalé.
 Li bay pwason freshe.
 Li bay pwason abri.
 Li pwotegé kôt la paskè li
 krazé vag yo.



Atensyon !!

Atik 3 kôd sou reglement koup,
 transpo ak komes bois peyi a pay
 bay peson moun dwa ni manyen ni
 dechouké mung sou nempot ki fôm
 si nou pa gen otorizasyon. Epitou li
 di konsa ke pou shak mung ke nou
 koupe fok nou plante 10.

**Moun ke yo baré k'ap
 coupe mung ap gen pou
 you peye you aman, epitou
 yo ka pren prizon!**

